

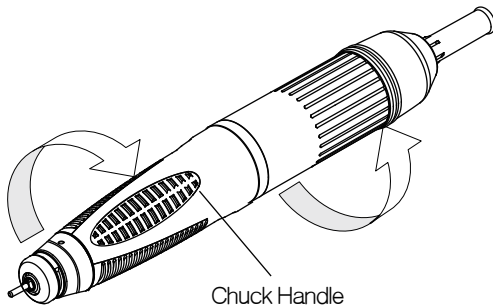
■ Specifications	<b>SDE-BS50C</b>	Input Voltage	NONLOAD RPM	Dimension(mm)		
		DC 30V, 0.5A	1,000~60,000	W	L	D
				212	160	23

■ Specifications	<b>SDE-BM50S1</b>	Input Voltage	NONLOAD RPM	Dimension(mm)		
		DC 30V, 0.5A	1,000~50,000	W	L	D
				231	160	27

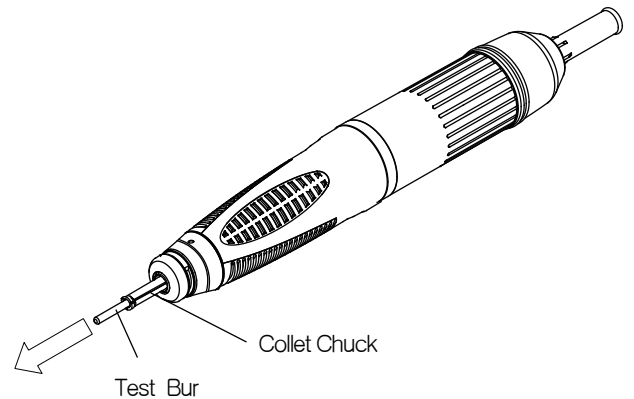
■ Specifications	<b>SDE-BM40S1</b>	Input Voltage	NONLOAD RPM	Dimension(mm)		
		DC 30V, 0.5A	1,000~40,000	W	L	D
				231	160	27

### Replacing the Collet Chuck

Step 1. Open the Collet Chuck

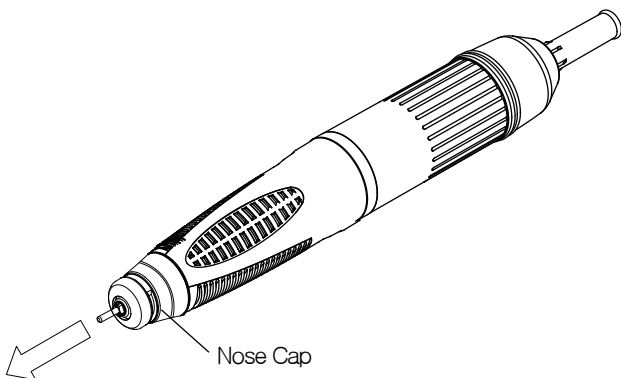


Step 2. Replacing the Collet Chuck

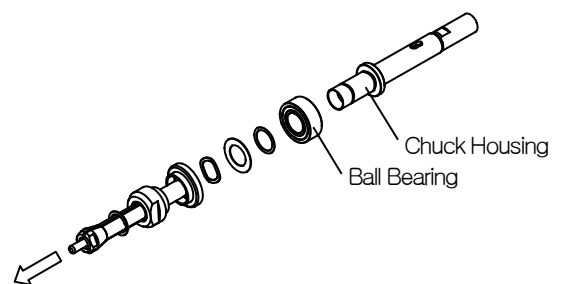


### Replacing the Ball Bearing

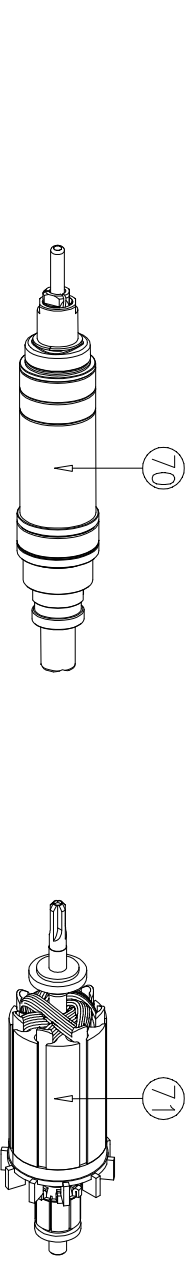
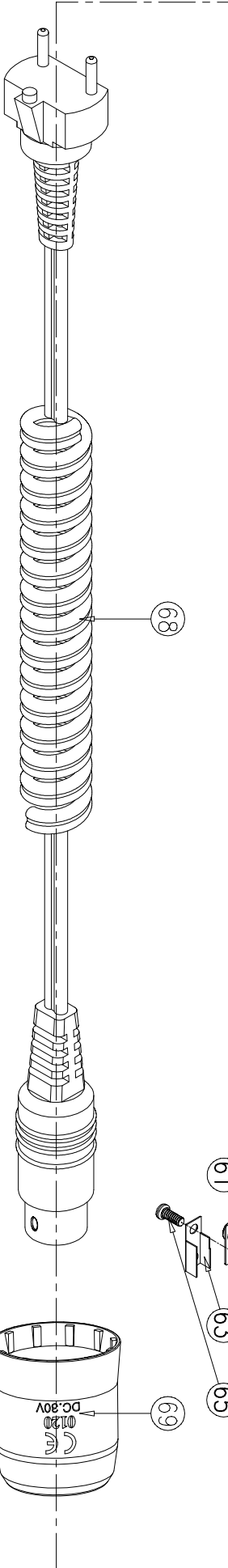
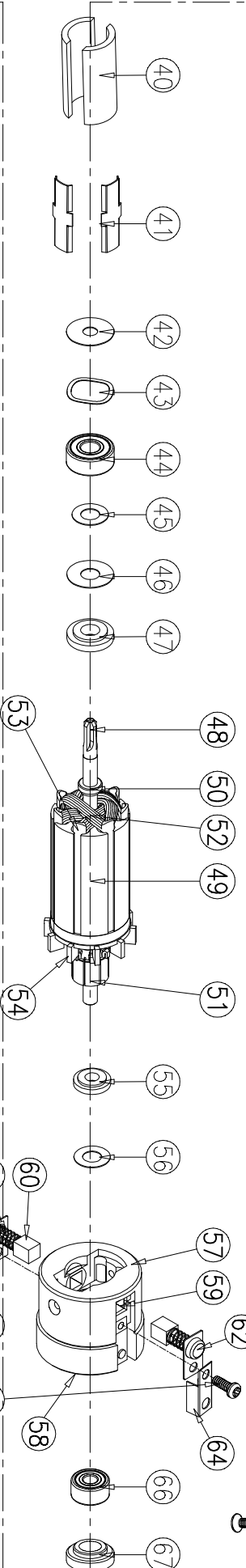
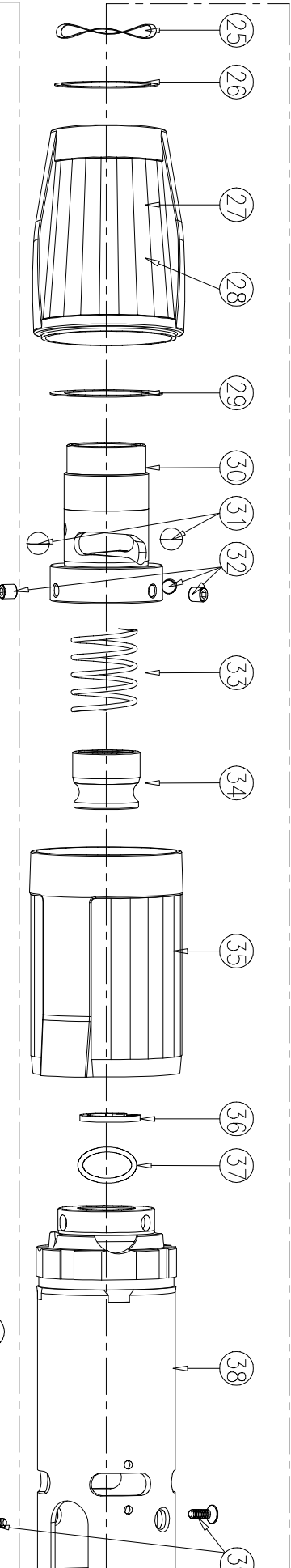
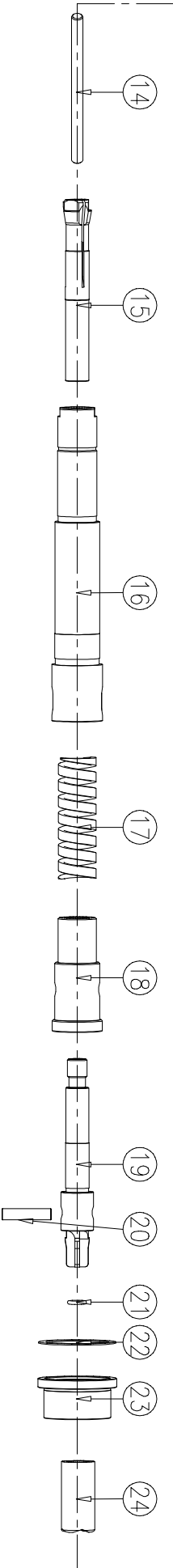
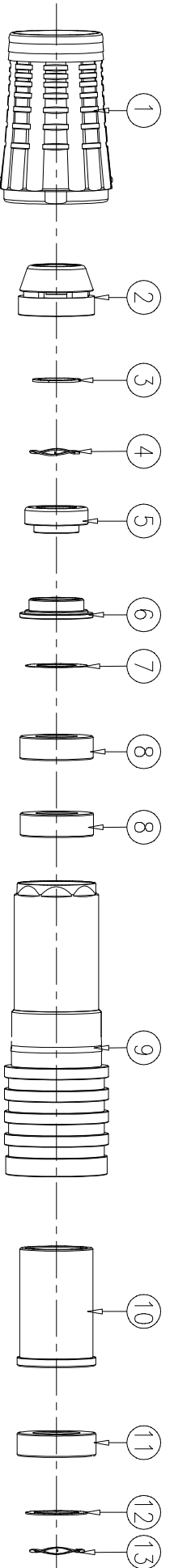
Step 1. Remove the Nosecone



Step 2. Replacing the Ball Bearing



번호	부품명	수량	도입번호
NO.	PARTS NAME	QUANTITY	DRAWING NO.
1	S40 HAND CAP COVER	1	S40-2-001-00
2	S40 HAND CAP HEAD	1	S40-5-001-01
3	S40 CHUCK HOUSING C-RING	1	S40-3-104-00
4	S40 1370 WAVE WASHER	1	S40-3-107-00
5	S40 COLLAR	1	S40-5-105-01
6	S40 BEARING FIX WASHER	1	S40-5-106-00
7	S40 1370 WASHER	1	S40-3-111-00
8	H35L BALL BEARING(1370ZZ)	2	H35L-8-201-00
9	S40 HAND CAP BODY	1	S40-5-102-00
10	S40 BUSH	1	S40-5-112-00
11	H37L BALL BEARING(1480ZZ)	1	H37L-8-202-00
12	S40 1480 WASHER	1	S40-3-113-00
13	S40 1480 WAVE WASHER	1	S40-3-108-00
14	H37L TEST BURR	1	H37L-6-116-00
15	H37L COLLET CHUCK 2.35	1	H37L-5-117-02
16	S40 CHUCK HOUSING	1	S40-5-115-00
17	H37L CHUCK SPRING	1	H37L-6-118-00
18	S40 JOINT SHAFT BODY	1	S40-5-121-00
19	S40 JOINT SHAFT	1	S40-5-122-00
20	JOINT SHAFT FIX PIN	1	S40-5-123-00
21	BH60 O-RING	1	BH60-7-307-00
22	S40 BEARING BUSH COLLAR WASHER	1	S40-3-146-00
23	S40 BEARING BUSH COLLAR	1	S40-5-124-00
24	BH60 CONNECTOR	1	BH60-2-014-00
25	S40 SET RING WASHER	1	S40-3-109-00
26	S40 SET RING TEFLON WASHER	1	S40-3-151-00
27	S40 SET RING	1	S40-2-002-00
28	S40 SET RING INSERT	1	S40-5-133-00
29	S40 CAM TEFLON WASHER	1	S40-3-150-00
30	S40 CAM	1	S40-5-132-00
31	S40 CAM BALL	2	S40-8-207-00
32	S40 MOVING HOUSING SPRING	3	S40-8-223-00
33	S40 MOVING HOUSING	1	S40-6-106-00
34	S40 MOTOR CASE COVER	1	S40-5-206-00
35	S40 MOTOR CASE	1	S40-2-142-00
36	S40 SNAP RING	1	S40-3-155-00
37	H37L 1030 FIX O-RING	1	H37L-7-175-00
38	S40 MOTOR CASE	1	S40-5-141-00
39	H37L MOTOR CASE BOLT	2	H37L-8-205-00
40	SM110 WASHER GUIDE 大	2	SM110-4-308-00
41	SM110 WASHER GUIDE 大	2	SM110-3-318-00
42	H37L COPPER WASHER	1	H37L-3-144-00
43	H37L 1030 WAVE WASHER	1	H37L-3-145-00
44	H37L BALL BEARING 1040ZZ	1	H37L-8-203-00
45	H37L 1040 COPPER WASHER	1	H37L-3-149-01
46	H37L 1040 TEFLON WASHER	1	H37L-3-150-01
47	H37L 1040 SPACER	1	H37L-2-152-00
48	H37L SHAFT #4	1	H37L-5-177-00
49	H37L CORE	73	H37L-3-155-00
50	H37L FRONT SHAFT BUSH #4	1	H37L-5-181-01
51	H37L COMMUTATOR	1	H37L-2-209-00
52	H37L COIL	1	H37L-8-155-00
53	H37L WEDGE	7	H37L-3-154-00
54	H37L FAN	1	H37L-2-178-00
55	H37L 830 SPACER	1	H37L-2-162-00
56	H37L TEFLON WASHER	1	H37L-3-001-00
57	SH37LN BEARING HOUSING	1	SH37LN-2-172-00
58	SH37LN BACK BEARING SIT	1	SH37LN-5-377-00
59	H37L BRUSH HOLDER	2	H37L-4-379-00
60	H37L CARBON BRUSH	2	H37L-4-163-00
61	H37L CARBON BRUSH SPRING	2	H37L-6-263-00
62	H37L CARBON BRUSH CAP	2	H37L-3-463-00
63	H37L TERMINAL(L)	1	H37L-3-266-00
64	H37L TERMINAL(R)	1	H37L-3-267-00
65	H37L CARBON BRUSH BOLT	2	H37L-8-206-00
66	H37L BALL BEARING 1030ZZ	1	H37L-8-208-00
67	SH37LN BEARING BUSH BOLT	1	SH37LN-5-488-00
68	SH37LN MOTOR CORD	1	SH37LN-6-173-00
69	H37L CARBON HOUSING COVER	1	H37L-2-174-02
70	S40 SPINDLE ASS'Y	.	S40-1-115-00
71	SH37L ARMATURE ASS'Y	.	SH37L-1-152-00



작성/검정	적용된도면	번호	날짜	작성	검정	사우
CUSTOM	APPLIED DWG. NO.	NO.	DATE	DWG	CHK	DESCRIPTION
		17.08.01	17.08.01	LSY	JKH	JOINT SHAFT FIX PIN 도면 수정.

표준/CUSTOM DWG. NO.	재료/MATERIAL	단위/UNIT
		mm

정밀/UNSPECIFIED TOLERANCES	처리/TREATMENT	축척/SCALE
0 Place : ±0.5		1/1
1 Place : ±0.3		
2 Place : ±0.15		
3 Place : ±0.015		

작성/DATE	작성/NAME	인용/SIGN	도명/TITLE	3RD ANGLE
17.08.01	이우민		SDE-S40 분해도	
검정/CHK	검정/NAME		도명/DRAWING NO.	축척/SCALE
17.08.01	김우민		S40-0-003-00-01	1

작성/DATE: 17.08.01, 작성/NAME: 이우민, 인용/SIGN: [Signature], 도명/TITLE: SDE-S40 분해도, 도명/DRAWING NO.: S40-0-003-00-01, 축척/SCALE: 1/1, 3RD ANGLE, CAD, SMT SAAYANG MICROTCH, A4(210x297)