

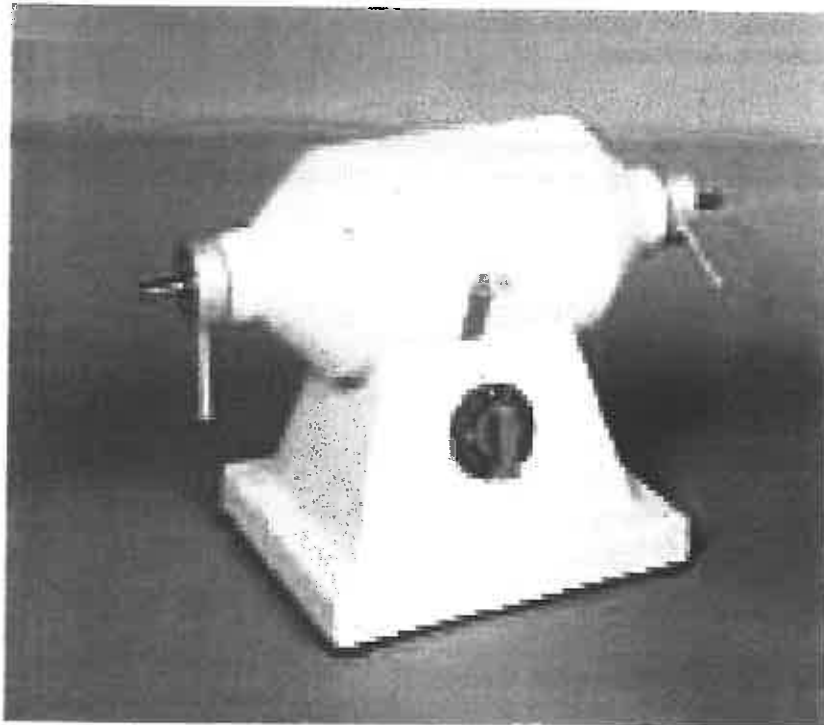


SIRIO DENTAL DIVISION

DESIGN AND COSTRUCTION OF EQUIPMENT
FOR DENTAL TECHNICIANS, DENTISTS AND BEAUTICIANS

USE AND MAINTENANCE

Polishing Machine PL 160



SIRIO DENTAL Srl

Via A.Accardi, 11 – 4714 Meldola FC – Italy

Reg. Imprese di Forlì-Cesena – C.F. e P.IVA: 03694510409 – Capitale soc. € 60.000 i.v.

Tel. +39 0543 490327 – Fax: +39 0543 499126

E.mail: sirio@siriodental.com Website: www.siriodental.it

PREMISE

Purpose of this operating manual issued by SIRIO DENTAL is to make any relation between the customer and the Technical Service Dept. easier, mainly in the view of providing the end-user with the directions for a correct and reliable use of the machine. Every unit is delivered with a copy of this manual and a careful observance of the directions contained herein is the basic condition to guarantee a perfect performance.

ATTENTION: the inobservance of the directions contained in this manual will give raise to an immediate discontinuance of the manufacturer's warranty provisions.

SHIPPING AND HANDLING

Unpack the items contained into each packing container with the utmost care. All the components of the polishing machine should be inspected at once, so as to make sure that no damage in transportation has occurred.

In case of damage, notify the manufacturer giving indications of the damaged parts.

GENERAL PRECAUTIONS

- Read with care this manual before attempting to start, service and/or performing any other operations on the machine.
- Operator and by-starter safety depend on the skilfulness, good judgement and caution in the use of the machine. Therefore, you would become familiar with the location and functions of all controls.
- The operator should be well trained and have attained a good knowledge and experience on this type of equipment.
- From time to time, inspect the parts that are subject to wear for condition and performance. Never tamper with the machine's electrical system.
- Whenever, for any reason the working process must be stopped, make sure that all controls are in a "neutral" position.
- The safety devices the machine is fitted with should be never removed or inactivated.
- Do not allow unauthorized persons to carry out repairs or service the machine.
- Never use gasoline, solvents, or other flammable compounds to clean the machine parts. Make use only of commercial non-flammable, non-toxic solvent-based cleaners.

RESIDUAL RISKS

Compliance with the general safety rules eliminates any residual risk in the use of the machines produced by SIRIO DENTAL, unless voluntarily caused by the operator.

TECHNICAL SPECIFICATIONS

Width	mm	340
Depth	mm	200
Height	mm	250
Rotation Speed	rpm	1400/2800
Net Weight	Kg	8.5
Power supply	Volt	220/240 V - Hz 50/60
Capacity	Kw	0.37

OPERATING INSTRUCTIONS

- Plug in the machine equipment (right-left) terminals, manually.
- Connect the machine electric power supply cable to the socket, after checking that the supplied voltage corresponds to the voltage as indicated in this manual and/or in the machine rating plate.

ATTENTION : do not get close to the machine with loose materials and/or ends. Failure to comply with this indication causes the risk of getting caught.

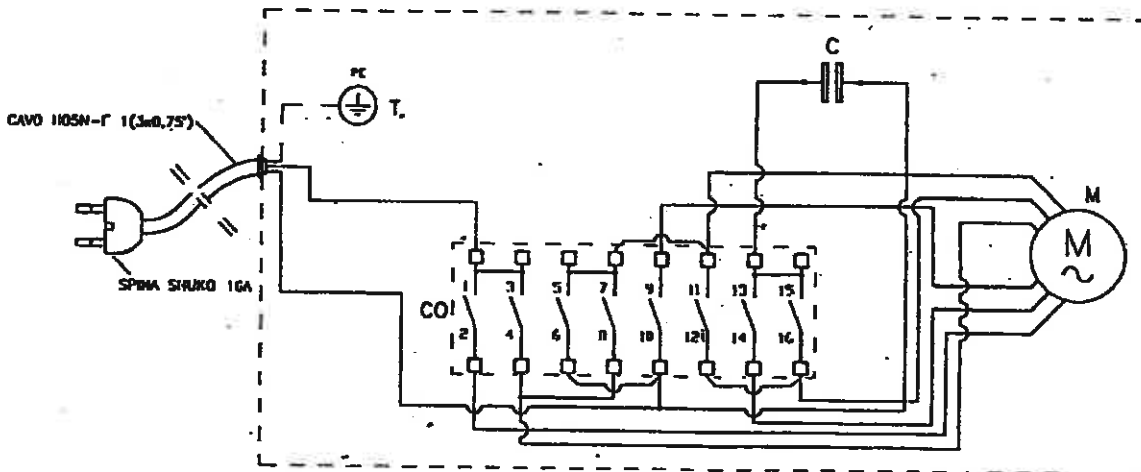
- Start the cleaning machine by the switch at its base.

SHEET TO ORDER SPARE PARTS - POLISH.MACHINE PL160
 With reference to Picture of Manual of Use and Maintenance

Pos	Denomination	Code
1	Cable lead	160.01
2	Bush	160.02
3	Rotor	160.03
4	Bearing	160.04
5	Foot	160.05
6	Condenser	160.06
7	Nut	160.07
8	Right/Left point	160.08
9	Point release	160.09
10	Screw	160.10
11	Shield	160.11
12	Body	160.12
13	Screw	160.13
14	Switch	160.14
15	Washer	160.15
16	Screw	160.16
17	Lever	160.17
18	Cover	160.18
19	Plug	160.19

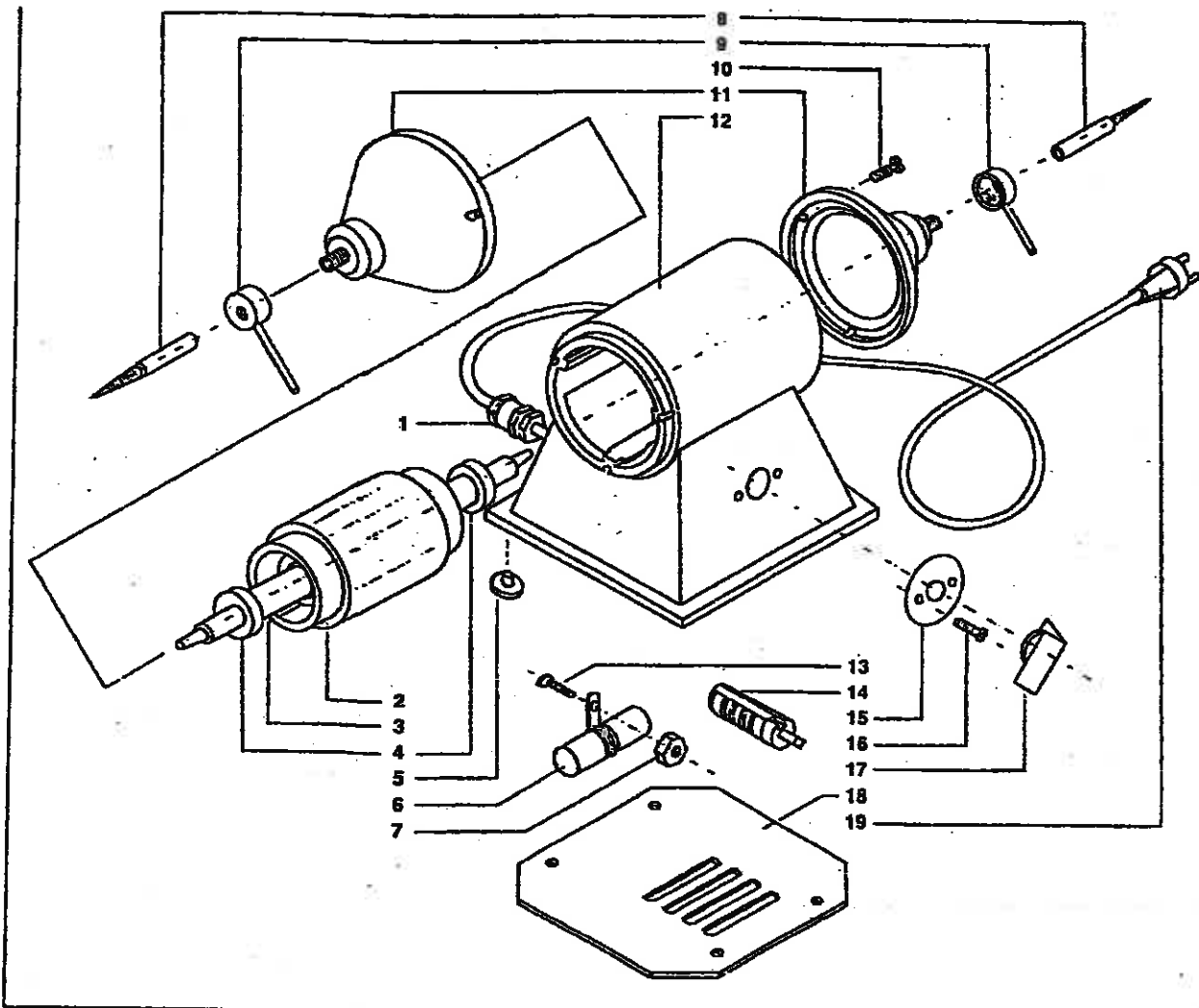
POLISHING MACHINE PL 160 - ELECTRIC PLAN

- T EARTH CONNECTION
- C CAPACITOR
- M INDUCTION MOTOR 2 SPEEDS
- CO SWITCH



SWITCH

CONTACT		POSITION						
1		X	X					X
0								
2	X				X	X	X	X



Rif.	Denominazione	Denomination	Denomination	Bezeichnung	Denominación
1	Passacavo	Cable lead	Passe-câble	Kabeldurchgang	Guía del cable
2	Boccota	Bush	Douille	Buchse	Casquillo
3	Rotore	Rotor	Rotor	Rotor	Rotor
4	Cuscinetto	Bearing	Roulement	Lager	Cojinete
5	Piede	Foot	Pied	Fuß	Pie
6	Condensatore	Condenser	Condensateur	Kondensator	Condensador
7	Dado	Nut	Ecrou	Mutter	Tuerca
8	Puntale dx/sx	Right/Left point	Pointe droite/gauche	Druckstück rechts/links	Clavija derecha/izquierda
9	Sblocco puntale	Point release	Deblocage pointe	Freigabe Druckstück	Desbloqueo de la clavija
10	Vite	Screw	Vis	Schraube	Tornillo
11	Scudo	Shield	Bouclier	Schutzschild	Pantalla
12	Corpo	Body	Corps	Rumpf	Cuerpo
13	Vite	Screw	Vis	Schraube	Tornillo
14	Interruttore	Switch	Interrupteur	Schalter	Interruptor
15	Rondella	Washer	Rondelle	Scheile	Arandela
16	Vite	Screw	Vis	Schraube	Tornillo
17	Lava	Lever	Levier	Hebel	Palanca
18	Coperchio	Cover	Couvercle	Deckel	Tapadera
19	Spina	Plug	Fiche	Stecker	Enchufe



DESIGN AND COSTRUCTION OF EQUIPMENT
FOR DENTAL TECHNICIANS, DENTISTS AND BEAUTICIANS

DECLARATION OF CONFORMITY

Meldola 01/01/2013

Re: CEE Directives: 2006/42 CE(ex 89/392 CEE) - 2006/95 CE(ex 73/23 CEE)
2004/108 CE (ex 89/336 CEE)

SIRIO DENTAL S.r.l., Via A. Accardi 11, 47014 Meldola FC, in the name of Eng. Antonio Zaccarelli, President,
declares that the equipment named

"PL 160 Polishing Machine"

and manufactured by Sirio Dental Srl complies with the above mentioned Directives.

This certificate shall not be re-produced except in full without the written approval of Sirio Dental Srl.

SIRIO DENTAL Srl
Ing. Antonio Zaccarelli, Presidente C.D.A

SIRIO DENTAL Srl
Via A.Accardi, 11 – 4714 Meldola FC – Italy
Reg. Imprese di Forlì-Cesena – C.F. e P.IVA: 03694510409 – Capitale soc. € 60.000 i.v.
Tel. +39 0543 490327 – Fax: +39 0543 499126
E.mail: sirio@siriodental.com Website. www.siriodental.it



DESIGN AND COSTRUCTION OF EQUIPMENT
FOR DENTAL TECHNICIANS, DENTISTS AND BEAUTICIANS

GUARANTEE CERTIFICATE

MODEL: POLISHING MACHINE PL160

SERIAL NUMBER: 7891

GUARANTEE LENGTH: Months 12

- 1- The guarantee has effect from the date of purchase of the machine, date certified by a sale document released by the seller (such as bill of lading, receipt of sale or fiscal slip) from which they are clearly stated the model and the serial number.
- 2- The guarantee includes substitution or repair of defective parts of the machine.
- 3 - The guarantee doesn't cover any defective parts due to negligence; improper use; improper maintenance; maintenance performed by non-qualified personnel or transportation damages; that is damages that cannot be considered manufacture defects for which the manufacturer cannot be hold responsible.
- 4 - The guarantee doesn't cover any case of improper use of the machine.
- 5 - Transportation cost of the machine and relative risks are at user's expense.

Meldola, 27/10/2014

SIRIO DENTAL Srl
Eng. Antonio Zaccarelli

SIRIO DENTAL Srl
Via A.Accardi, 11 – 4714 Meldola FC – Italy
Reg. Imprese di Forlì-Cesena – C.F. e P.IVA: 03694510409 – Capitale soc. € 60.000 i.v.
Tel. +39 0543 490327 – Fax: +39 0543 499126
E.mail: sirio@siriodental.com Website: www.siriodental.it