

Bei den Bestellnummern muss ? durch A = grau oder S = schwarz ersetzt werden. Beispiel: 7600A010-22 für grau oder 7600S010-22 für schwarz

When ordering one of the following parts replace the symbol in the order number ? by A = for grey or S = for black coloured parts. Example: 7600A010-22 for grey or 7600S010-22 for black

Adapter

Name	d ₁	d ₂	Form/Shape	Ref. Nr./No.
Universal Ø 10 mm	10,0	26,3		7600?010-10
A-dec	17,0	26,3		7600?010-16
KaVo	20,0	26,3		7600?010-19
Dürr Comfort	19,0	26,3		7600?010-20
Dürr Eco / Selectiv	21,0	26,3		7600?010-22
Universal Ø 18,0 mm	18,0	26,3		7600?010-23
Universal Ø 18,0 mm	18,0	26,3		7600?010-25

Kugelgelenk Ball joint

optional

7600?030-00



Saughandstücke groß Large handpiece

optional

7600?010-00



7600?040-00



Drehhülsen Sleeve

7600?010-08



7600?010-04



7600?010-30



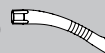
7600?010-07



Kanülen Cannula

Ø 16 mm

0700-059-50
(5 Stk./pieces)
grau / grey



0700-058-50
(4 Stk./pieces)
grau / grey



Ø 11 mm

0700-057-50
(5 Stk./pieces)
grau / grey

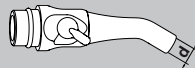


Adapter

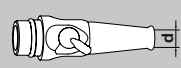
Name	d ₁	d ₂	Form/Shape	Ref. Nr./No.
Universal Ø 6,0 mm	6,0	20,7		7600?020-06
A-dec	7,2	21,0		7600?020-07
KaVo	8,0	21,0		7600?020-08
A-dec	7,2	21,0		7600?020-09
Cattani	10,0	21,0		7600?020-10
Dürr Comfort	10,0	21,0		7600?020-11
Universal Ø 6,5 mm	6,5	18,0		7600?020-12
Universal Ø 10,0 mm	10,0	21,0		7600?020-13

Saughandstücke klein Small handpiece

7600?020-00

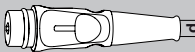


7600?020-55

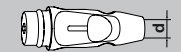


d = 6±0,1 mm

7600?025-00

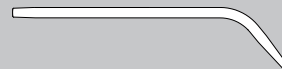


7600?025-50

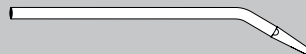


Chirurgische Absaugkanülen Surgical suction cannula

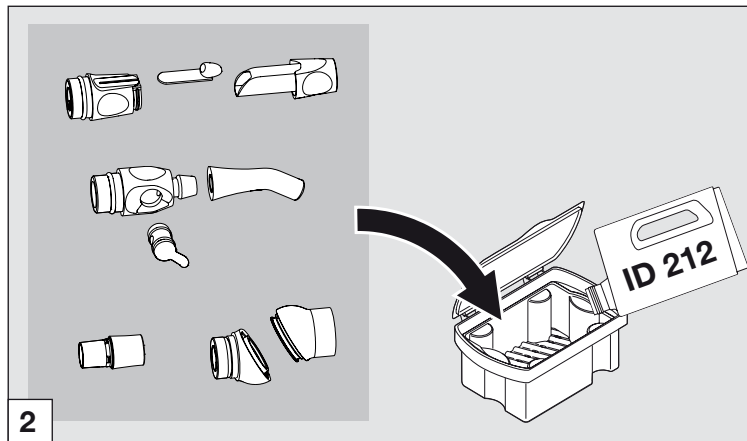
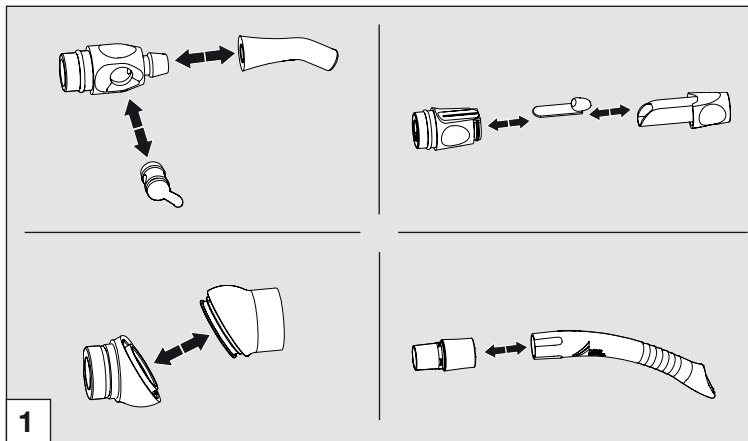
0700-005-00 / Ø 5 mm (5 Stk./pieces)
0700-007-00 / Ø 3 mm (5 Stk./pieces)



0700-005-50 / Ø 4,8 mm (20 Stk./pieces)
0700-007-50 / Ø 2,5 mm (20 Stk./pieces)



Reinigung und Desinfektion Saughandstück / Cleaning and disinfection suction handpiece

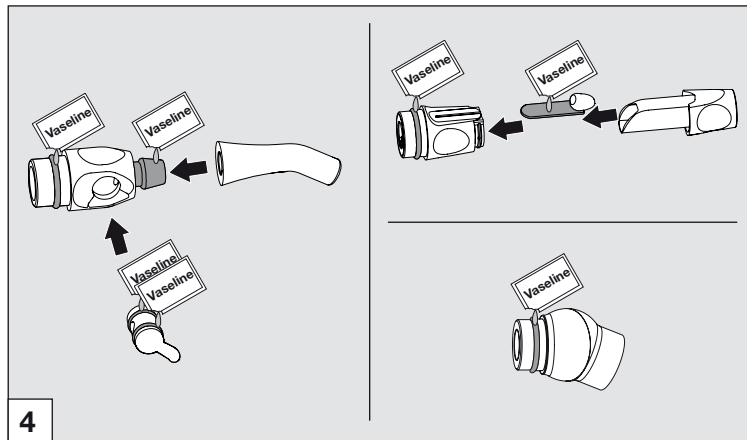


	Temperatur / Temperature	134 °C	
	Überdruck zur Umgebung / Overpressure to environments	2,16 bar 0,216 MPa	
	Haltezeit / Working time	5 min	

3

Für weitere Informationen zur manuellen und automatischen Aufbereitung siehe Montage- und Gebrauchsanweisung Schlauchablage Comfort, Best.-Nr.: 9000-606-18. Siehe auch Download-Bereich unter www.duerr.de.

For further information for manual and automatic preparation of materials refer to the hose manifold Comfort Installation and Operating Instructions, order no.: 9000-606-18. See also download pages at www.duerr.de



O-Ring Set 7600-008-00
 1x O-Ring 14 x 2, 2x O-Ring 18 x 2, 1x O-Ring 22 x 2
 O-rings only available in kit !

